



# Southeast Fishery Bulletin

National Marine Fisheries Service, Southeast Regional Office, 263 13<sup>th</sup> Avenue South, St. Petersburg, Florida 33701

FOR INFORMATION CONTACT:  
Sustainable Fisheries Division  
727-824-5305, FAX 727-824-5308

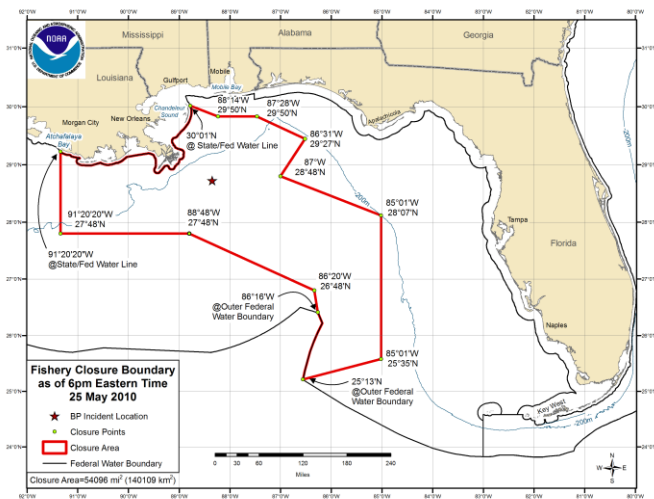
May 25, 2010  
FB10-045

## BP Oil Spill: NOAA Modifies Commercial and Recreational Fishing Closure in the Oil-Affected Portions of the Gulf of Mexico

Current revisions to the closure, described below, will be effective on **May 25, 2010 at 6 p.m. eastern time** (5 p.m. central time). All commercial and recreational fishing including catch and release is prohibited in the closed area; however, transit through the area is allowed.

Federal water boundary; thence northerly to 26°48' N and 86°20' W; thence northwesterly to 27°48' N and 88°48' W; thence westerly to 27°48' N and 91°20'20" W; thence northerly to the point where 91°20'20" W. long. intersects with the 3 nautical mile Louisiana state boundary; thence along the seaward limit of Louisiana's waters. The closure measures 54,096 sq mi (140,109 sq km), which is slightly more than 22% of the Gulf of Mexico exclusive economic zone. The majority of federal waters in the Gulf of Mexico are open to commercial and recreational fishing.

Modeling and mapping the actual and projected spill area is not an exact science. NOAA Fisheries Service strongly advises fishermen not to fish in areas where oil or oil sheens (very thin layers of floating oil) are present, even if those areas are not currently closed to fishing.



### Ways To Receive Closure Information:

- Southeast Fishery Bulletins, to sign up send an email to: [SERO.Communications.Comments@noaa.gov](mailto:SERO.Communications.Comments@noaa.gov)
- Call 1-800-627-NOAA (1-800-627-6622) to hear a recording of the current coordinates
- Listen to NOAA Weather Radio for updates
- Text messages on your cell phone, to sign up text **fishing@gulf** to 84469 (for more information visit <http://www.deepwaterhorizonresponse.com/go/doc/2931/558107>)
- Follow us on Twitter: usnoaagov to get a tweet when the closed area changes

### Links for more information:

- Southeast Regional Office's Web page:**  
<http://sero.nmfs.noaa.gov>
- NOAA's Fisheries Service**  
[http://sero.nmfs.noaa.gov/deepwater\\_horizon\\_oil\\_spill.htm](http://sero.nmfs.noaa.gov/deepwater_horizon_oil_spill.htm)
- NOAA's National Ocean Service**  
<http://response.restoration.noaa.gov>
- Deepwater Horizon Response**  
<http://www.deepwaterhorizonresponse.com>

### Map Link:

[http://sero.nmfs.noaa.gov/sf/deepwater\\_horizon/BP\\_OilSpill\\_FisheryClosureMap\\_052510.pdf](http://sero.nmfs.noaa.gov/sf/deepwater_horizon/BP_OilSpill_FisheryClosureMap_052510.pdf)

This revised closed area is bounded by rhumb lines connecting, in order, the following coordinates: From the point where 30°01' N. lat. intersects with the 3 nautical mile Louisiana state boundary; proceeding southeasterly to the point 29°50' N. lat. and 88°14' W. long.; thence, easterly to the point 29°50' N. lat. and 87°28' W. long.; thence, southeasterly to the point 29°27' N. lat. and 86°31' W. long.; thence southwesterly to the point 28°48' N. lat. and 87°0' W. long.; thence, southeasterly to the point 28°07' N. lat. and 85°01' W. long.; thence, southerly to the point 25°35' N. lat. and 85° 01' W. long.; thence, southwesterly to where the point 25°13' N. lat. intersects with the outer Federal water boundary; thence northerly along the boundary to where the point 86°16' W. long. intersects the outer

Fishermen who wish to contact BP about a claim should call 1-800-440-0858.