



Southeast Fishery Bulletin

National Marine Fisheries Service, Southeast Regional Office, 263 13th Avenue South, St. Petersburg, Florida 33701-5505

FOR INFORMATION CONTACT:
727-824-5305, FAX 727-824-5308

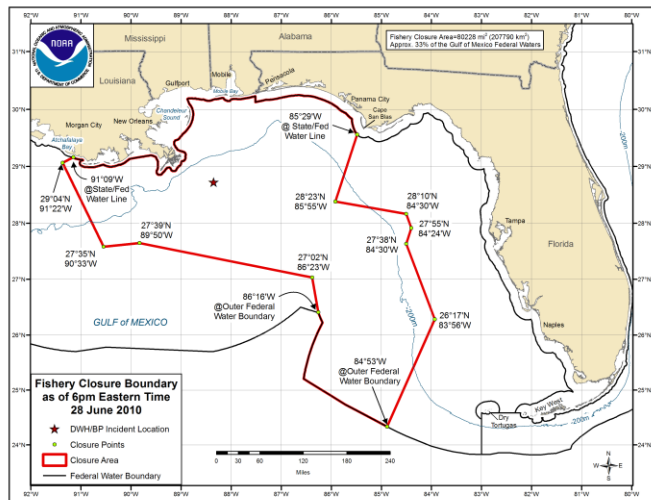
June 28, 2010
FB10-059

BP Oil Spill: NOAA Modifies Commercial and Recreational Fishing Closure in the Oil-Affected Portions of the Gulf of Mexico

Current revisions to the closure, described below, will be effective on **June 28, 2010 at 6 p.m. eastern time** (5 p.m. central time). All commercial and recreational fishing including catch and release is prohibited in the closed area; however, transit through the area is allowed.

or oil sheens (very thin layers of floating oil) are present, even if those areas are not currently closed to fishing.

The closed area is bounded by rhumb lines connecting, in order, the following coordinates:



North latitude	West longitude
At state/federal line	85° 29'
28° 23'	85° 55'
28° 10'	84° 30'
27° 55'	84° 24'
27° 38'	84° 30'
26° 17'	83° 56'
At outer federal line	84° 53'
Follow the outer boundary of federal waters northerly to...	
The outer federal line	86° 16'
27° 02'	86° 23'
27° 39'	89° 50'
27° 35'	90° 33'
29° 04'	91° 22'
At the state/federal line	91° 09'
Follow the state/federal water line easterly to beginning point	

Map Link:

http://sero.nmfs.noaa.gov/sf/deepwater_horizon/BP_OilSpill_FisheryClosureMap_062810.pdf

The closure measures 80,228 sq mi (207,790 sq km) and covers about 33% of the Gulf of Mexico exclusive economic zone. The majority of federal waters in the Gulf of Mexico are open to commercial and recreational fishing.

Modeling and mapping the actual and projected spill area is not an exact science. NOAA Fisheries Service strongly advises fishermen not to fish in areas where oil

Reminders

If state waters are closed to fishing due to the oil spill, all vessels must comply with that closure. If state waters are not closed to fishing due to the oil spill, federally permitted vessels may fish in those waters while abiding by all other applicable regulations.

Permit holders are reminded to maintain their federal vessel permits by submitting timely reporting requirements and renewal applications, even if the vessel is not currently engaged in fishing activities.

Ways To Receive Closure Information:

- Southeast Fishery Bulletins: to sign up send an email to: SERO.Communications.Comments@noaa.gov
- Call 1-800-627-NOAA (1-800-627-6622) to hear a recording of the current coordinates
- Listen to NOAA Weather Radio for updates
- Text messages on your cell phone: to sign up text **fishing@gulf** to 84469 (for more information visit <http://www.deepwaterhorizonresponse.com/go/doc/2931/558107>)
- Follow us on Twitter: usnoagov to get a tweet when the closed area changes

Links for more information:

Southeast Regional Office's Web page:

http://sero.nmfs.noaa.gov/deepwater_horizon_oil_spill.htm

NOAA's National Ocean Service

<http://response.restoration.noaa.gov>

Deepwater Horizon Response

<http://www.deepwaterhorizonresponse.com>

Fishermen who wish to contact BP about a claim should call 1-800-440-0858.