



Southeast Fishery Bulletin

National Marine Fisheries Service, Southeast Regional Office, 263 13th Avenue South, St. Petersburg, Florida 33701-5505

FOR INFORMATION CONTACT:
727-824-5305, FAX 727-824-5308

September 3, 2010
FB10-078

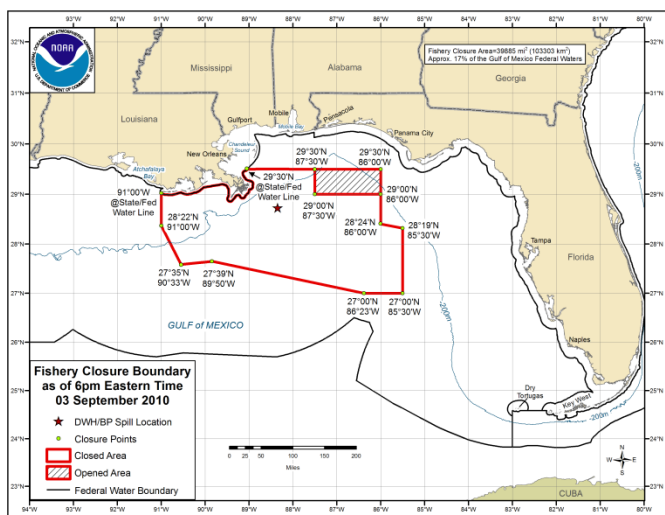
BP Oil Spill: NOAA Re-opens Federal Waters offshore the Florida Panhandle to Commercial and Recreational Fishing

Effective **September 3, 2010 at 6 p.m. eastern time** (5 p.m. central time), NOAA will reopen 3,114 square miles (8,066 sq km) of area it had previously closed to commercial and recreational fishing in the Gulf of Mexico in response to the BP/Deepwater Horizon oil spill.

models show the area is at a low risk for future exposure to oil. NOAA collected 128 finfish samples from this area, including commercially and recreationally important species, such as tuna and swordfish. Sensory testing showed no detectable oil or dispersant odors or flavors in the samples, and the results of chemical analysis were well below levels of concern.

NOAA continues to work closely with the U.S. Food and Drug Administration and the states to ensure seafood safety, by closing fishing areas where tainted seafood could potentially be caught, and assessing whether seafood is tainted or contaminated to levels that pose a risk to human health. NOAA and FDA are working together to sample seafood from inside and outside the closure area, as well as dockside- and market-based sampling.

The area closed to all fishing is bounded by rhumb lines connecting, in order, the following coordinates:



Map Link:

http://sero.nmfs.noaa.gov/sf/deepwater_horizon/BP_OilSpill/FisheryClosureMap_090310.pdf

The area closed to all fishing now measures 39,885 sq mi (103,303 sq km) and covers about 17% of the Gulf of Mexico exclusive economic zone. All commercial and recreational fishing including catch and release is prohibited in this closed area. Transit through the closed area is allowed. NOAA will continue to evaluate the need for fisheries closures based on the evolving nature of the spill and will re-open closed areas as appropriate.

The re-opened area was originally closed because oil was present in the area; however, no oil has been documented in the area since July 3, and only scattered light sheens since July 29. Trajectory

North latitude	West longitude
29° 30'	At state/federal line
29° 30'	87° 30'
29° 00'	87° 30'
29° 00'	86° 00'
28° 24'	86° 00'
28° 19'	85° 30'
27° 00'	85° 30'
27° 00'	86° 23'
27° 39'	89° 50'
27° 35'	90° 33'
28° 22'	91° 00'
At the state/federal line	91° 00'
Follow the state/federal water line easterly to beginning point	

Reminders

Modeling and mapping the actual and projected spill area is not an exact science. NOAA Fisheries Service strongly advises fishermen not to fish in areas where oil or oil sheens (very thin layers of floating oil) are present, even if those areas are not currently closed to fishing.

If state waters are closed to fishing due to the oil spill, all vessels must comply with that closure. If state waters

are not closed to fishing due to the oil spill, federally permitted vessels may fish in those waters while abiding by all other applicable regulations.

Permit holders are reminded to maintain their federal vessel permits by submitting timely reporting requirements and renewal applications, even if the vessel is not currently engaged in fishing activities.

Ways to Receive Closure Information:

- Sign up for Southeast Fishery Bulletins: send an email to: SERO.Communications.Comments@noaa.gov
- Call 1-800-627-NOAA (1-800-627-6622) to hear a recording of the current coordinates (with messages in Spanish and Vietnamese)
- Listen to NOAA Weather Radio for updates
- Sign up for text messages on your cell phone: text **fishing@gulf** to 84469 (for more information, visit <http://www.deepwaterhorizonresponse.com/go/doc/2931/558107>)
- Follow us on Twitter: usnoaagov to get a tweet when the closed area changes

Links for more information:

Southeast Regional Office's Web page:

http://sero.nmfs.noaa.gov/deepwater_horizon_oil_spill.htm

NOAA's National Ocean Service

<http://response.restoration.noaa.gov>

Deepwater Horizon Response

<http://www.deepwaterhorizonresponse.com>

Fishermen who wish to contact BP about a claim should call 1-800-440-0858.